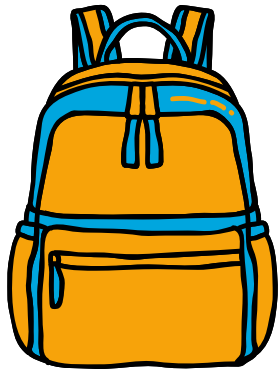


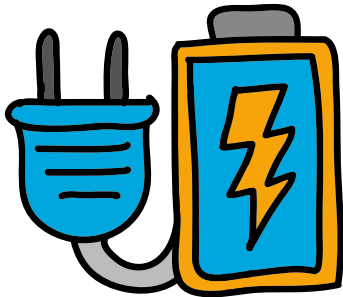
# Transporting your laptop



## Use a protective sleeve or bag

- ✓ It's helpful to wrap or cover devices when transporting to and from school.
- ✓ Ensure laptops are enclosed in a backpack or bag to protect from weather during transport.

## Charge your laptop overnight



- ✓ There may not be easy access to charge or plug-in your laptop at school - so plug it in overnight.
- ✓ Restart your laptop each day to ensure you receive updates and routine maintenance tasks.

## Know your username & password



- ✓ Teachers don't have a method to look up student passwords.
- ✓ It's important to keep passwords confidential, don't display visibly on the laptop.
- ✓ Have your student practice typing their username and password on their own at home.