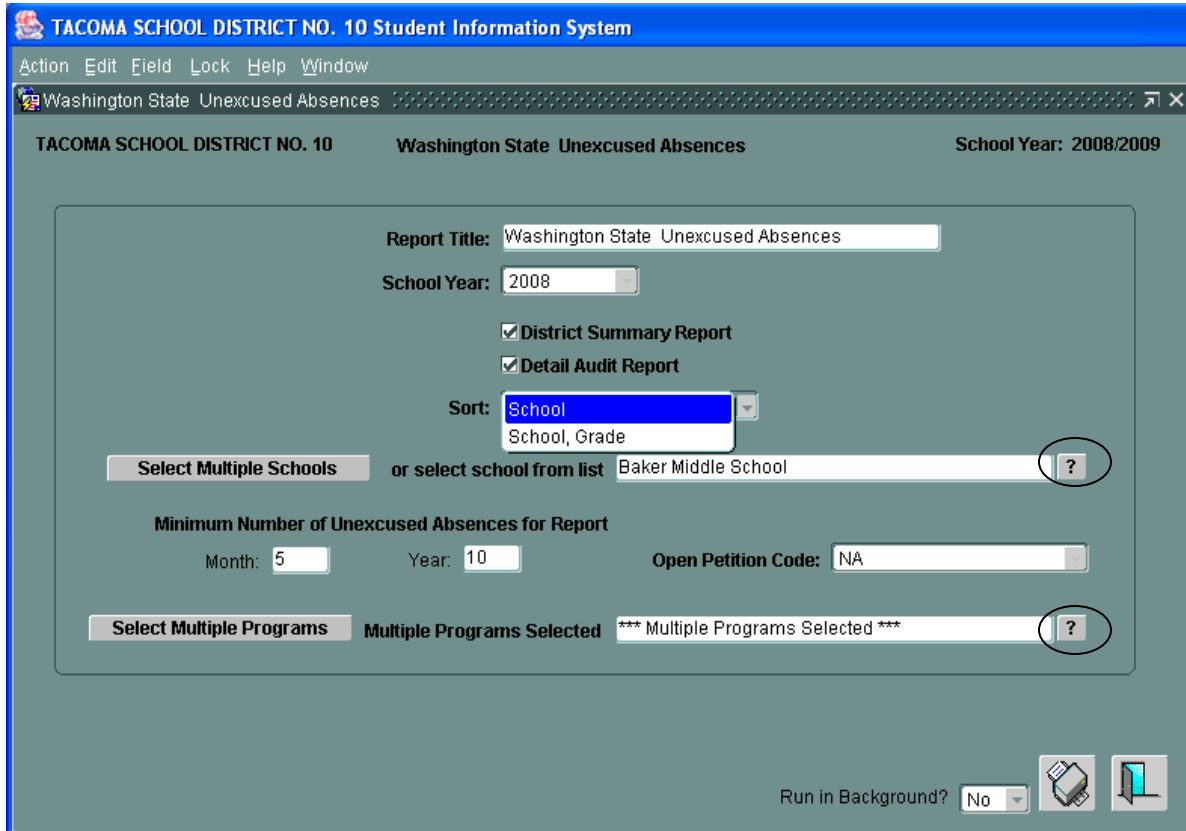


Quick Guide for Washington State Unexcused Absences

Menu Path: Main Menu > Reports > WA State Compliance Reports > Washington State Unexcused Absences



The *Washington State Unexcused Absences* provides an Audit and Summary Report. The Summary Report gives a list of all students and any Unexcused Absences that they may have occurred during the school year. The Detail Audit Report gives a break down by Ethnicity, SPED and Truancy information.

You have the option to sort the report by *School* or *School, Grade*. The *Minimum Number of Unexcused Absences for Report* is set for the Default state minimum requirement of 5 Unexcused Absences in a month and 10 in a year. Programs assignments are optional but may be included in the report by clicking on the button.

After you have selected the criteria, Click on the button.

District Summary Report Example:

Pupil No	Student Name	Grade	Ethn	Unexcused Absences	Days Present	Disabled	LEP
67	Ala	06	H	0.0	164.0		Y
93	AlaJ	08	H	0.0	164.0		
92	AlaJ	07	B	0.0	164.0		
90	Ala	08	A	0.0	164.0		
07	Ala	07	B	0.0	164.0		
89	AlaJ	07	B	0.0	164.0	Y	
96	Alv	07	H	0.0	164.0		
43	Alv	08	A	0.0	164.0		
79	Alv	06	W	1.0	163.0	Y	
20	Alv	06	W	0.0	164.0		
53	Alv	06	B	0.0	164.0	Y	
28	Alv	06	W	0.0	164.0	Y	

District Audit Report Example:

A	B	C	D	E	F	G	H	I	J	K	L
Number of unexcused absences in the school year (Grades 1-8)											
All students*	Amer. Indian	Asian/ Pac. Is.	Black	Hispanic	White	Disabled	LEP	Low SES	Average annual enrollmt	No. of student days in academic year	Unexcused absence rate (column A / columns J*K)
57.0	12.0	4.0	21.0	6.0	11.0	17.0	0.0	26.0	590.0	164.0	0.08

* Not a sum of all columns

Need Help?
 Try the **Help** feature located on each eSIS screen **OR** call the eSIS Help Line at **571.eSIS (3747)**