



USING YOUR ADMIN LAPTOP



TABLE OF CONTENTS

Logging into your laptop.....	1
Using the Workstation Only button.....	3
Your new desktop.....	4
Locking your laptop.....	5
Accessing your applications.....	6
Group and Home folder icons.....	8
Using your e-mail.....	9
What DeepFreeze is and how it works.....	10
How the D:\ Drive works.....	11
Saving to a Flash Drive.....	13
Important changes on saving your data.....	14
Finding your Home Drive via the My Computer icon..	15
Using your web browser.....	17
Printing.....	18
In Review: Changes to the Admin Laptop.....	20
Contacting the Technology Services Helpdesk.....	21

LOGGING INTO YOUR LAPTOP

In order to log into your laptop, you need a Novell network account username and password. If you don't have this, please contact the Technology Services Helpdesk: 571-2378

When you start your laptop, you will be presented with the following screen:

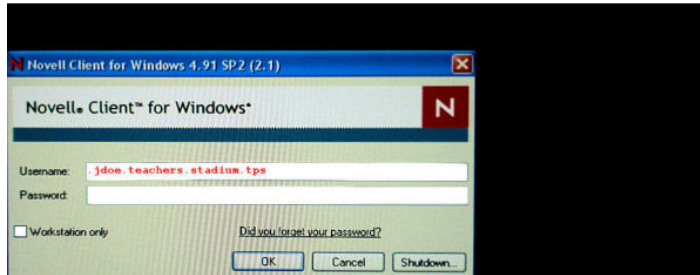


If you are receiving the message: *'The system could not log you on to the network'* please check your username and password. In some cases you need your full context. example:

.jdoe.teachers.stadium.tps

If you are receiving the message: *'Tree or Server cannot be found'* check your network cable connections and restart your computer

If you are receiving the message: *'Login denied. You have not changed your password and your grace login period has expired. Contact your system administrator - this is x2378.'* And you must choose a **new** password at this point.



Enter your Novell username and password (this is not your GroupWise password).

Example: .jdoe.admin.stadium.tps

Click OK

CONTACTING THE TECHNOLOGY SERVICES HELPDESK: 571-2378

LAPTOP PROBLEMS:

To more efficiently solve your problem, please have the following information available:

1. Are you on a PC or a MAC?
2. Have you restarted your computer or the device not working?
3. Provide a detailed description of the issue, including exact error messages (if any).
4. What application was being used when the problem occurred?
5. Have there been any changes to the computer lately? This includes software or hardware installations, and includes Internet downloads.
6. If you can't print: Are you logged into the network? What application won't print?
7. What is the asset tag number from the device having the problem?

If an asset tag number cannot be provided, please place a Post-It on the affected device, along with the Work Order number the Technology Services Helpdesk will provide to you.

REQUESTS:

If you have a request (such as moving equipment or installing software), please have the following information available:

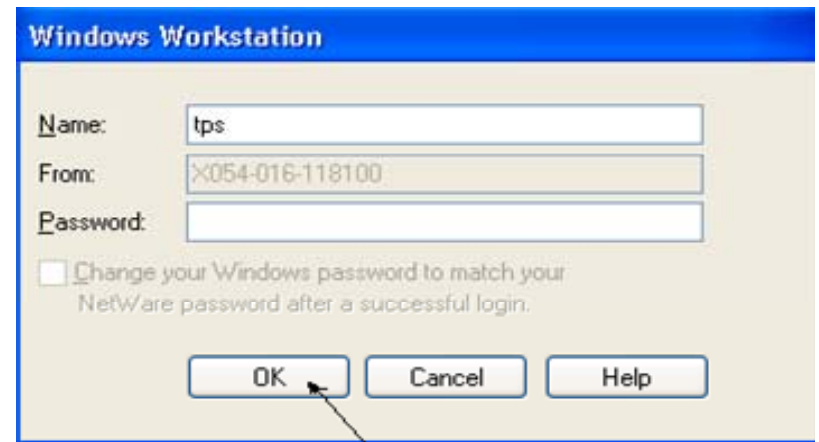
1. Provide a detailed description of the request.
2. Is the request for a PC or a MAC?
3. What is the asset tag number from the device needing the request?

If an asset tag number cannot be provided, please place a Post-It on the affected device, along with the Work Order number the Technology Services Helpdesk will provide to you.

LOGGING IN CONTINUED...

After you successfully log into Novell, you will be presented with the Windows logon screen.

The login name is TPS with no password.



Windows Workstation

Name: tps

From: X054-016-118100

Password:

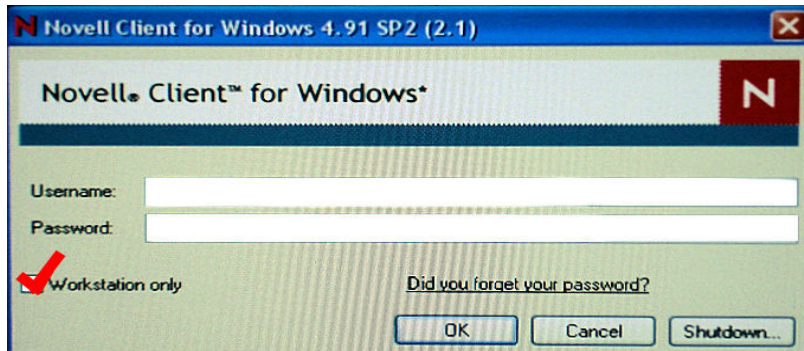
Change your Windows password to match your NetWare password after a successful login.

OK Cancel Help

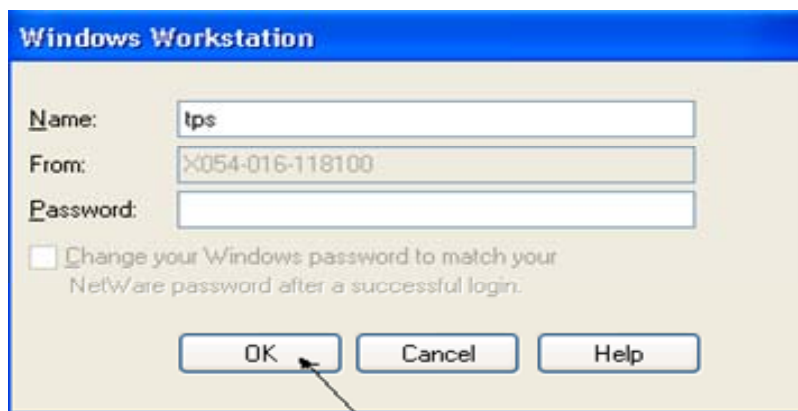
Click OK (NO PASSWORD)!

USING THE WORKSTATION ONLY BUTTON

If you are working from home, away from the District's network, please select the "Workstation Only" button at the Novell Logon screen:



You will then be presented with the Windows logon screen. The login name is TPS with no password.



Click OK (NO PASSWORD)!

IN REVIEW: CHANGES TO THE ADMIN LAPTOP

What's new on your Admin Laptop:

To log in to the Admin laptop, you must have a network username and password. If you do not have those, please contact the Technology Services Helpdesk: 571-2378.

The "Windows Logon" now has only one user account. TPS is now the default windows account, and has full Administrator privileges.

When you are away from the District's network, you can log on using the "Workstation Only" button.

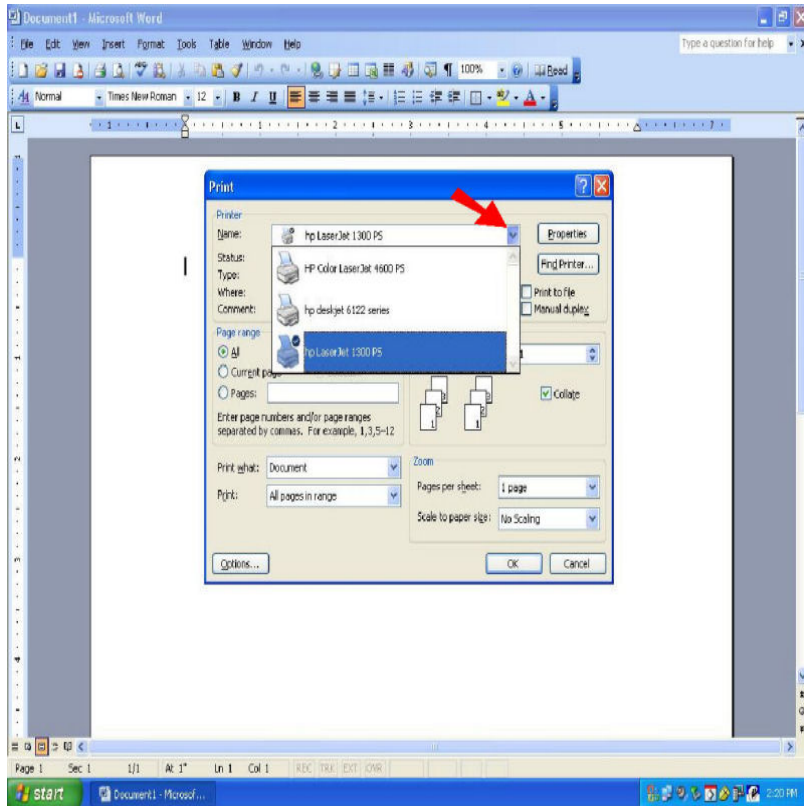
DeepFreeze is now installed on your laptop but is not active. This allows us to obtain your Laptop's address in order to perform remote control functions.

Your PC now has a C:\ and D:\ drive. Please save any data to the D:\ drive, your Home Drive, or an external drive, such as a Flash Drive.

Your laptop's desktop contains four new icons: Lock System, ZENworks, Group Folder, Home Folder. Please check the Table of Contents for instructions on using your new icons.

PRINTING CONTINUED...

Click the Down arrow where the Printer Name is located, and you will see other printers:



If you have more than one printer to choose from, highlight the printer you want to use.

Click OK to print.

If you are away from the District's network, you will not be able to access your work printers.

YOUR NEW DESKTOP

After logging into Windows, you will be presented with your new desktop:



There are a few new icons to be aware of on your new desktop:



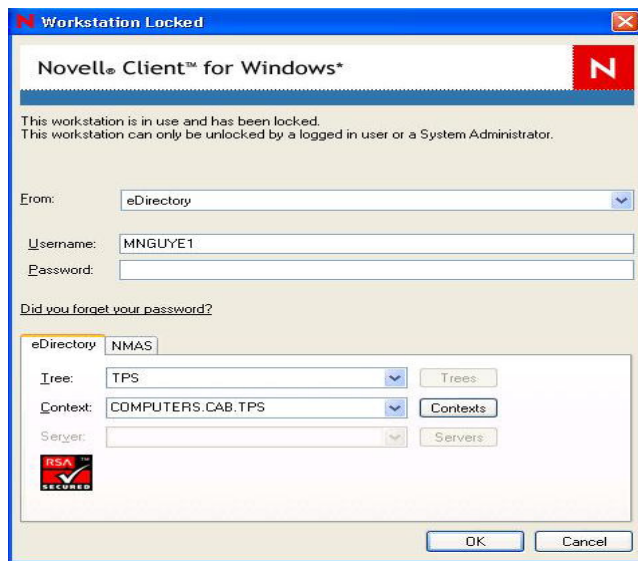
These icons will be explained in the following sections.

LOCKING YOUR LAPTOP

If you walk away from your laptop, it is advisable to lock it, so that others (co-workers, students, parents) will not see your important documents on the screen. To do this, double-click on the Lock System icon:



The screen will change to a locked status:

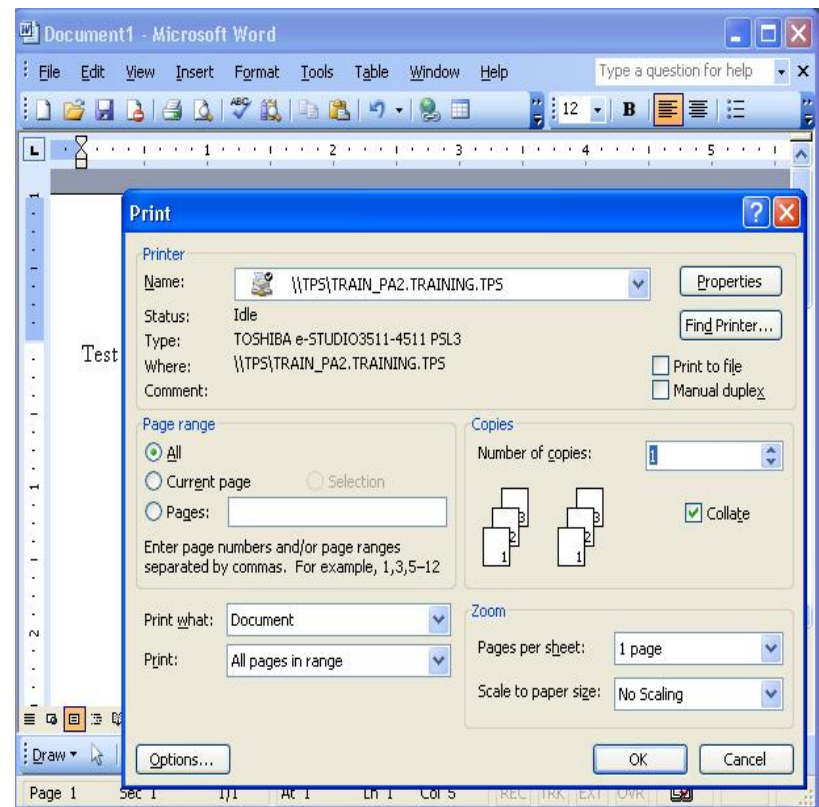


When you return, enter your Novell password, and you will return to your desktop.

PRINTING

If you would like to print to a different printer that you have access to in your building, here's how.

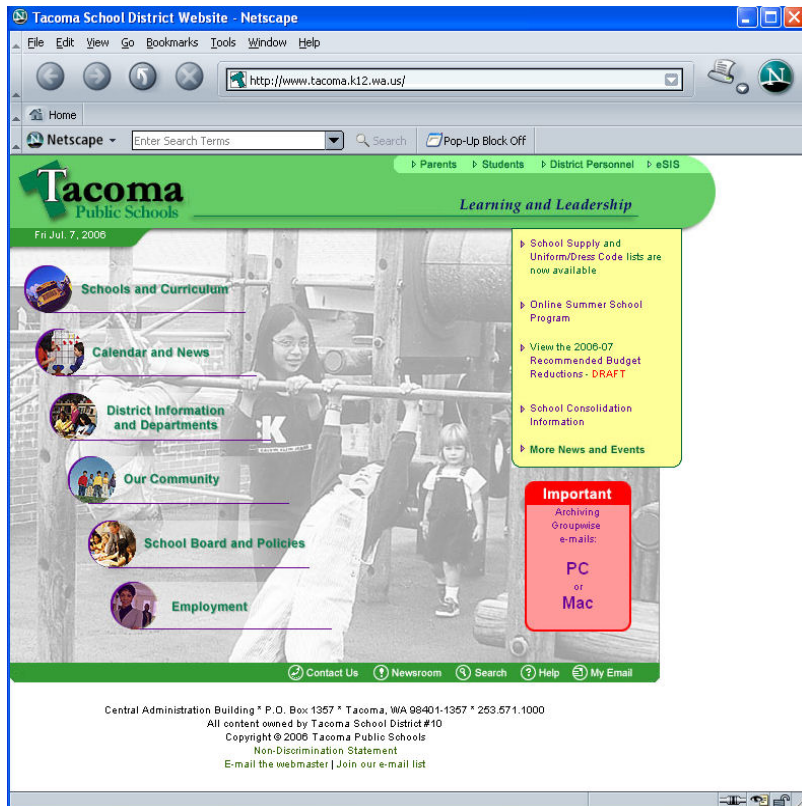
While you are in the document you want to print, click File/Print. You will see the following:



USING YOUR WEB BROWSER

To access the Tacoma School District homepage and the Internet, open the ZENworks Applications folder on your desktop (as described on page 6) and double-click on the Netscape icon.

When it comes up, you will see the following:



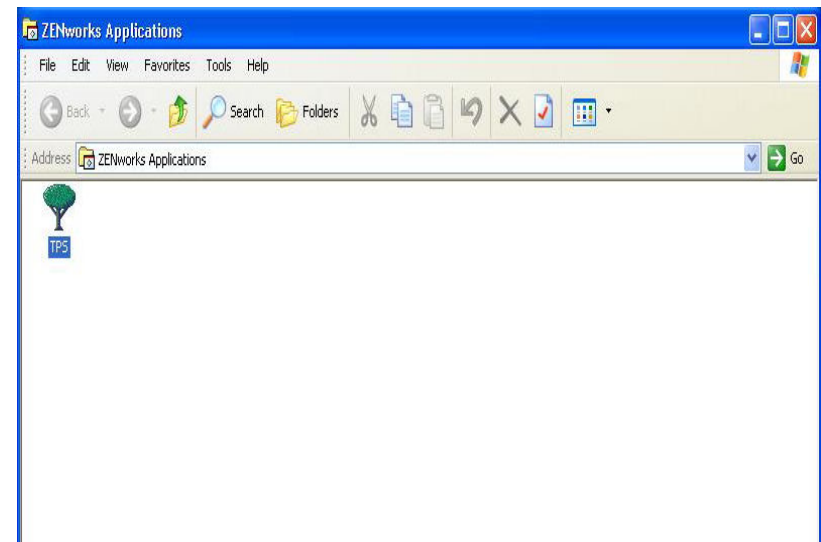
From here, you can access the district website and the Internet.

ACCESSING YOUR APPLICATIONS

To access applications installed on your laptop, double-click the ZENworks Applications icon:

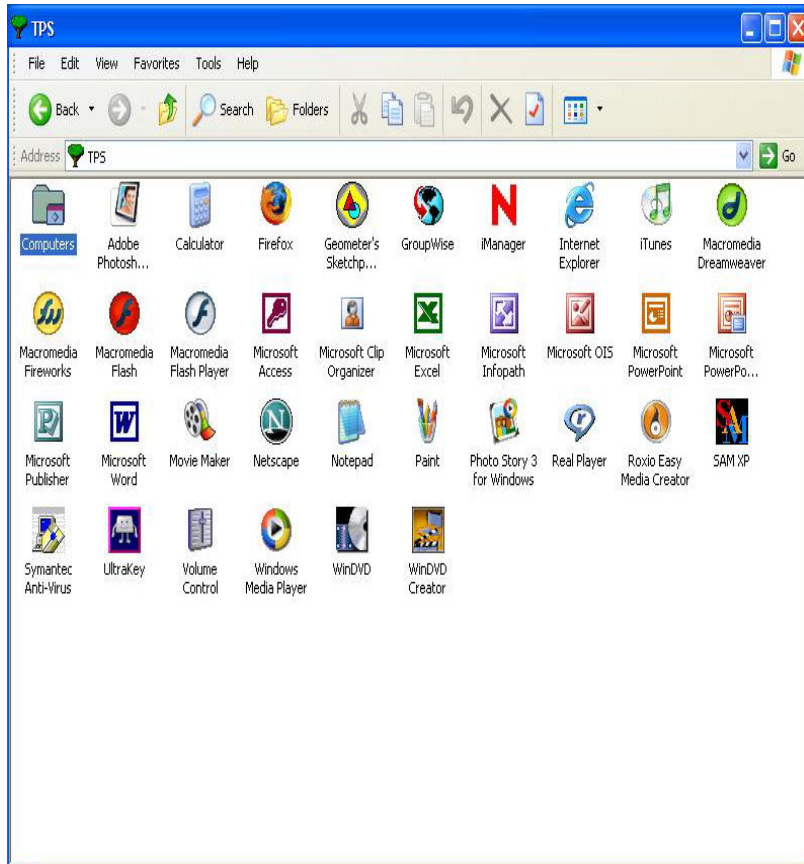


The ZENworks Applications folder will open:



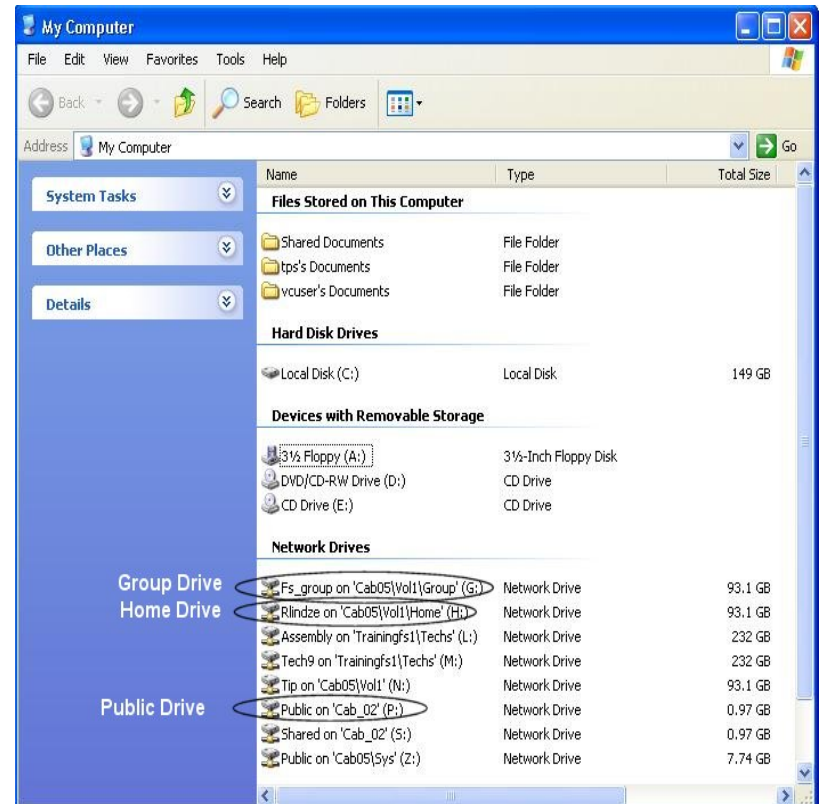
Double-click on the TPS tree. You will be presented with a window that resembles the screenshot on the following page.

ACCESSING APPLICATIONS CONTINUED...



From here, you can click on any application that is installed on your laptop.

When you double-click on the “My Computer” icon, you will be presented with this view:



Your Home Drive is listed as the (H:) drive. It will have your logon name listed, which makes it easy to identify.

As you can see, using the “My Computer” icon enables you to access several other networked drives, such as the Group and Public drives.

Note: Depending on your network permissions, your network drives may vary. The Group and Public drives will always remain.

FINDING YOUR HOME DRIVE VIA THE MY COMPUTER ICON

Your Home Drive is your networked storage drive. It is located at the Central Administration Building (CAB), and is backed up by the networking staff.

Your Home Drive is the place to store important data, such as your grade book and other information you want saved.

You can get to your Home Drive either by double-clicking on the Home Folder icon on your desktop (see page 7), or by double-clicking on the “My Computer” icon on your desktop:



GROUP AND HOME FOLDER ICONS

To access the Group Folder assigned to you, double-click on the icon on your desktop:



To access the Home Folder assigned to you, double-click on the icon on your desktop:



Your Home Folder is your networked storage drive. It is located at the Central Administration Building (CAB), and is backed up by the networking staff.

Your Home Drive is the place to store important data, such as your grade book and other information you want saved.

For information on accessing your Home Folder through the “My Computer” icon, please see page 13.

USING YOUR E-MAIL

To access your e-mail, open the ZENworks Applications folder on your desktop (as described on page 6) and choose GroupWise.



Enter your e-mail password when prompted (this is not your initial Novell logon password). If you do not know what your password is, please contact the Technology Services Helpdesk: 571-2378.

Remember, when you are away from the District's network, you won't be able to use the GroupWise e-mail client.

IMPORTANT CHANGES ON SAVING YOUR DATA

Saving your data to the D:\ drive, your Home Drive is recommended.

Your Microsoft Office documents will save to your D:\ drive automatically.

Save to an external hard drive (such as a Flash Drive) to take your documents with you for safe-keeping.

SAVING TO A FLASH DRIVE

Another great way to save your data is to purchase what is called a Flash Drive:



Flash drives are an external hard drive that you can take with you wherever you go.

These drives are available from the district's Technology Purchases website:

<http://tednet.tacoma.k12.wa.us/newpricing/index.asp>

They can also be purchased at your local computer or office supply store.

For best use with a PC, please plug your Flash Drive in BEFORE you log in.

WHAT DEEPFREEZE IS, AND HOW IT WORKS

DeepFreeze is now installed on your laptop but is not active. This allows Technology Services Technicians to obtain your Laptop's network address, in order to perform remote repairs.

To make sure that you don't lose any valuable data, please save your data to either your D: drive or Home Drive (H:). In fact, on your desktop, you will always have a reminder:

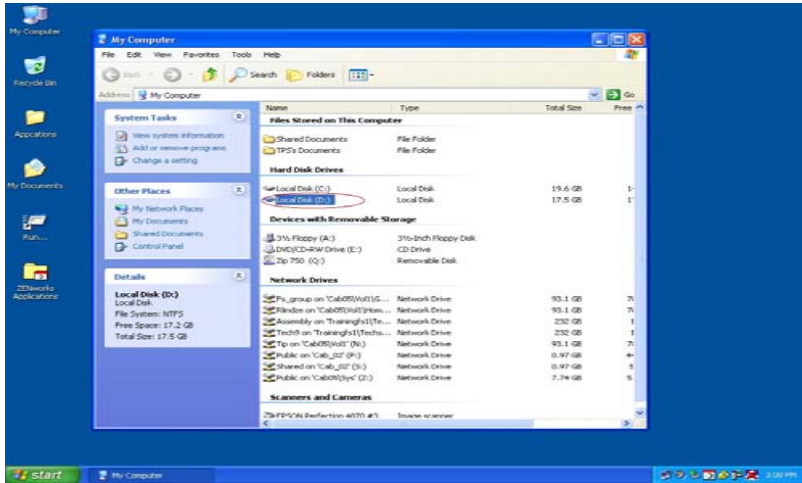


**All files must be saved in your
HOME DIRECTORY, D: DRIVE
OR ANY EXTERNAL DRIVE
or they will be DELETED when
the computer is shut down.**

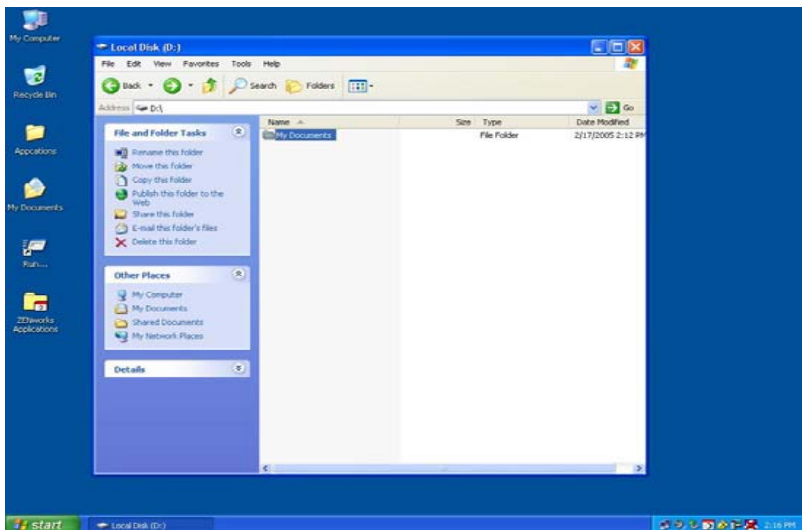
If you cannot find your Home directory, ask for help.

HOW THE D:\ DRIVE WORKS

When you double-click on the “My Computer” icon on the desktop, you will see that there is now a D:\ drive listed:



When you double-click on the D:\ drive, you will notice that the “My Documents” folder now resides there.



D:\ DRIVE CONTINUED...

To access your “My Documents” folder on the D:\ drive, just double-click on the folder. You will see the following:

