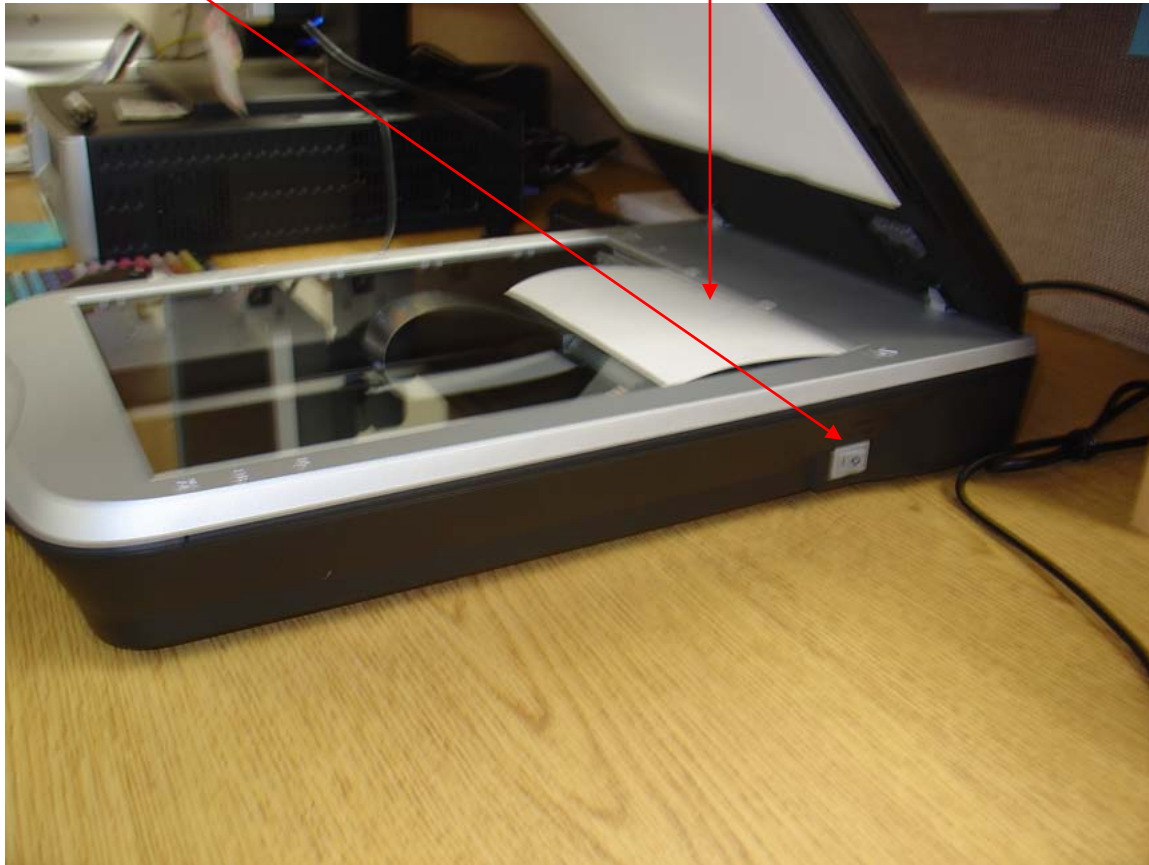


SCANNING AN IMAGE

EPSON PERFECTION V500 PHOTO

Step 1

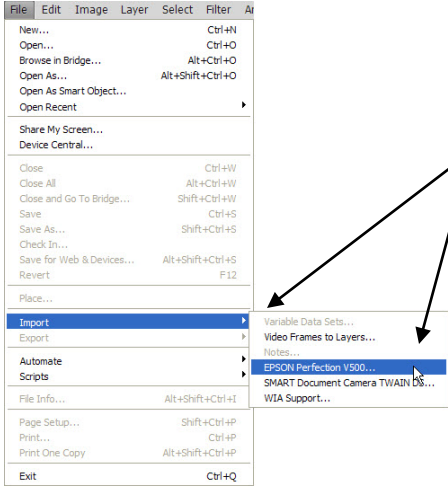
Turn scanner on. Please picture face down in upper right-hand corner. Close the scanner lid.



Step 2

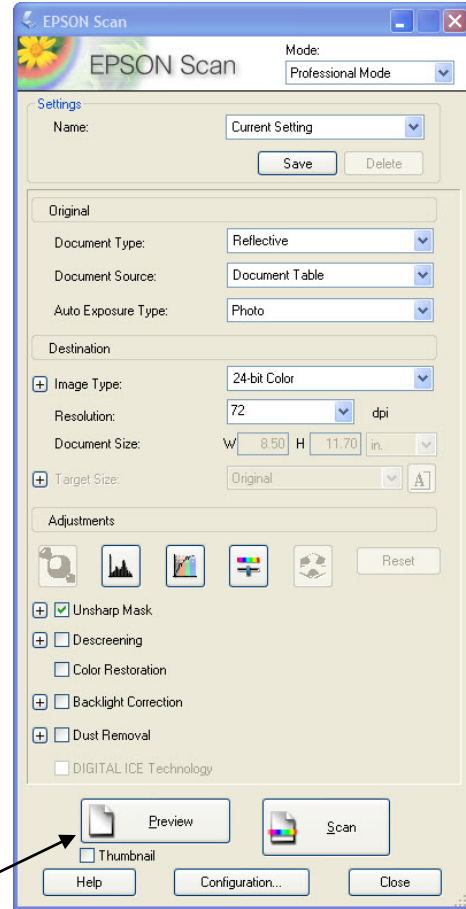
Open Adobe Photoshop CS4 (in my example I had pinned the application to the start menu – it may be in your All Programs/Adobe Master Collection CS4 Folder).





Step 2

Go to the File menu and pull down to Import. Slide over to Epson Perfection V500. Release your mouse button.



Step 3

Notice setting: make changes to mirror

Mode: Professional

Document Type: Reflective

Document Source: Document Table

Auto Exposure Type: Photo

Image Type: 24-bit Color

Resolution: 72 (in this traing example we will use 72

dpi the proper dpi for a Web site)

Step 4

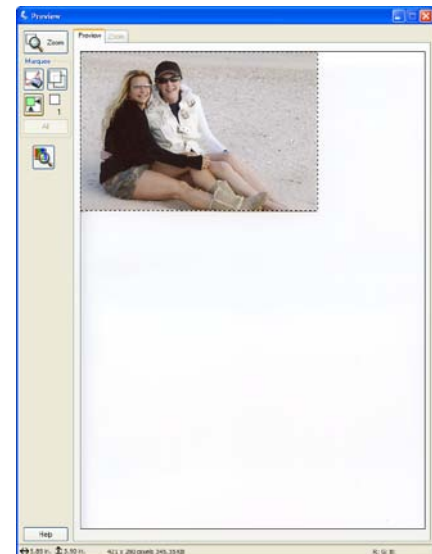
Click the Preview button.



Use the cursor to outline the portion of the picture you wish to scan.

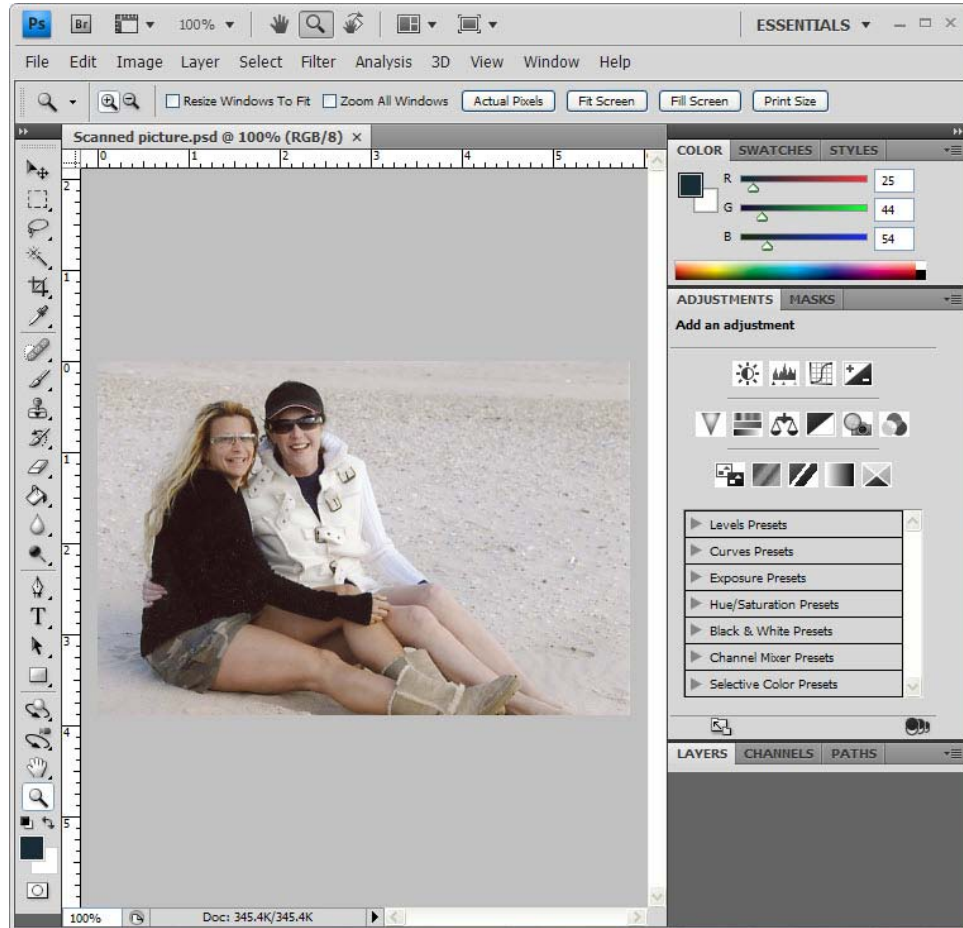
Step 5

Click the Scan button.



Step 6

Close scanner windows.



Your scan is now complete. Your scanned photo is open in Photoshop ready for your enhancements or to Save (Ctrl+S).

Note the location of the saved file to ensure it is saved in the correct location.

Remember to remove your photo from the scanner.

DPI suggestions:

72 dpi for the web

150 dpi for printing on copy quality paper

300+ dpi for printing on Photo quality paper