



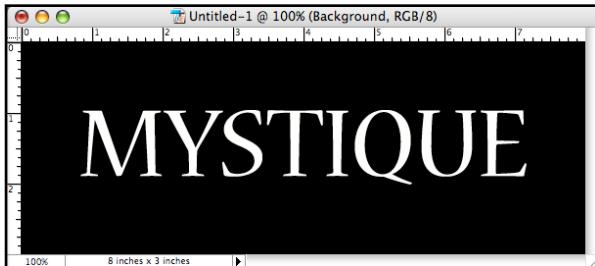
Gradient Glow with Bevel

STEP ONE: Open a document in the **RGB Mode**. I selected an 8 in. by 3 in. document size. Make sure the foreground color (found on the **Tools Menu**) in the Color Picker is black.

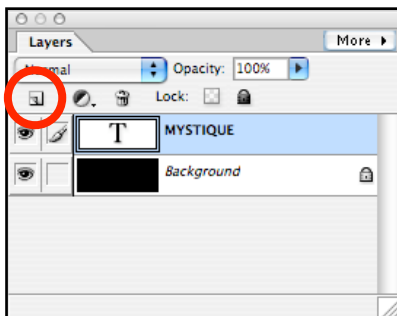


Press the letter “t” to select the Type Tool. Change the foreground color to white. and then enter your text. Use the Move Tool (V) to center your text

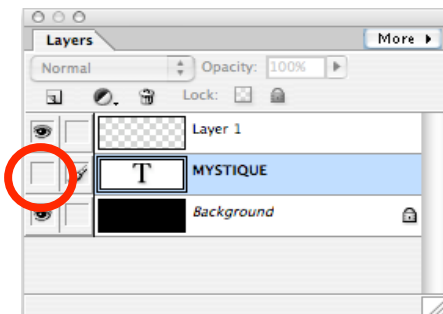
This effect seems to work well with tall, thin typefaces (I used **Nueva Std – 108 pt**) In the Layers palette, select the background and fill with black.



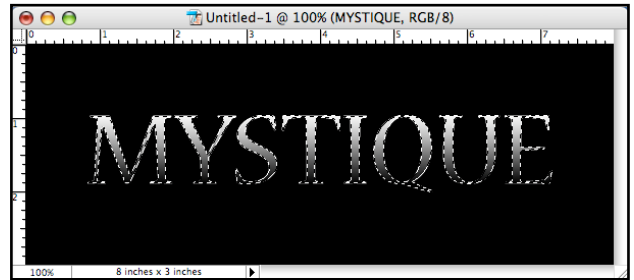
STEP TWO: Create a new layer by clicking the **New Layer** icon on the upper left of the **Layers Palette**.



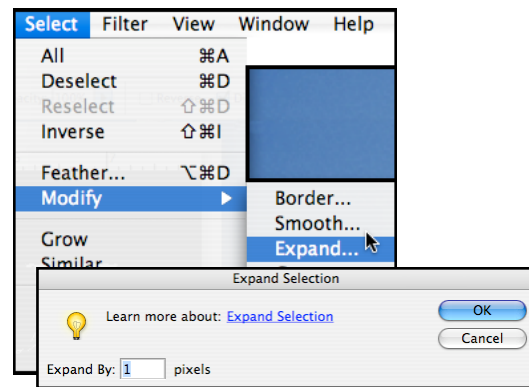
STEP THREE: Hold down the **Command key (PC: Control key)** and click on the **Text Layer** to put a selection around your type. Click on Eye icon in the Layers Palette (to the left of the of the Text Layer) to make that layer invisible.



STEP FOUR: Press the letter “d” to reset the foreground color to black and the background to white. Select the **Gradient Tool** and **drag a short distance through the type from bottom to top.** (As shown below.)

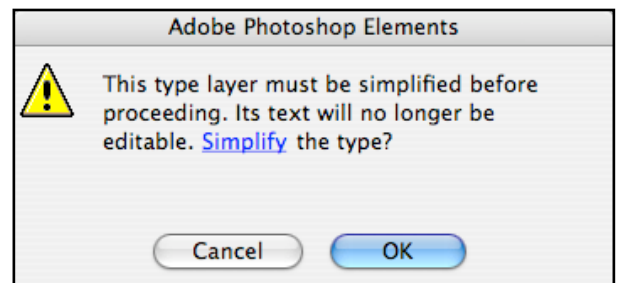


STEP FIVE: Under the **Select Menu**, choose **Modify** and then **Expand**. Enter **1 pixel**, then press **OK**.

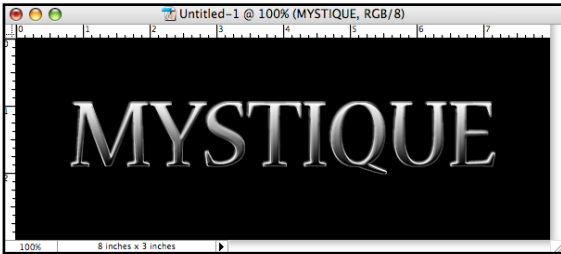


Create a new layer by clicking on the **New Layer** icon in the **Layers Palette**. Create another Gradient fill by **dragging from top to bottom** of the text (the opposite direction from which you dragged on your original text layer).

Be sure to **Simplify** (also called Rasterizing) your **Text Layer**.



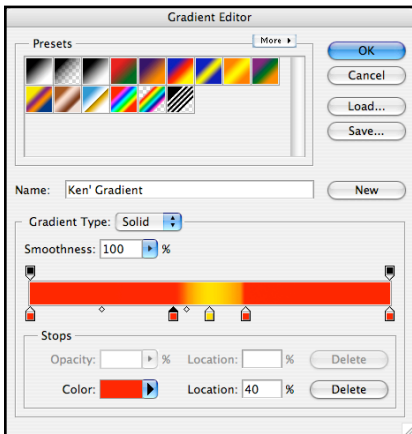
Drag this new layer behind layer 1. Make sure your type layer is selected. Go to the **Layer Style Menu**, and choose **Simple Emboss**.



STEP EIGHT: Under the Filter Menu, under Blur. Choose Gaussian Blur. Type in 9 pixels, then press OK (use a higher number for hi-res images). Duplicate Layer 3 by dragging it to the New Layer icon. Next, move this layer above Layer 1. Change the Layer Blend Mode to Overlay and lower the Opacity to 30%. We used the Type Tool to add the "Circus of the Sun" text below the type effect,



STEP SIX: Click on the **Background Layer**, then press **Command-D (PC: Control-D)** to deselect. Press **Command-I (PC: Control-I)** to invert this layer. Click on the **Edit** button next to the gradient sample on the **Gradient Options Bar** to bring up the **Gradient Editor**. Create a gradient like the one below, type in a name and then click new.



STEP SEVEN: Create a new layer by clicking on the **New Layer icon**. In the **Layers Palette**. Hold down the **Command key (PC: Control key)** and click on the **Text Layer** to make it an active selection. Under the **Select Menu**, choose **Modify** and choose **Expand**. Type in **7** pixels, then press **OK**. Drag the **Gradient Tool** from the top to the bottom of the selection. Next press **Command-D (PC: Control-D)** to deselect.

