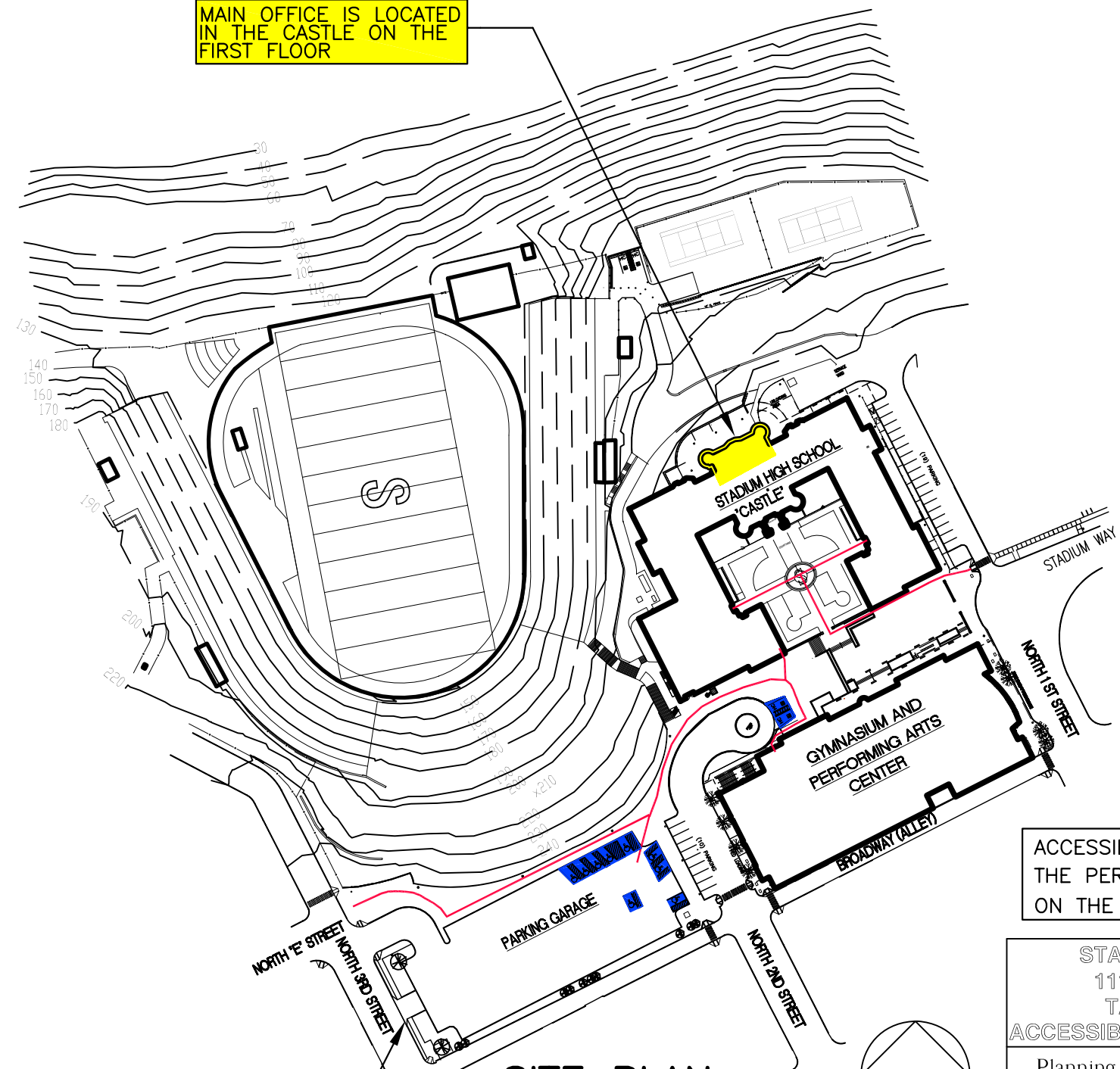


MAIN OFFICE IS LOCATED
IN THE CASTLE ON THE
FIRST FLOOR



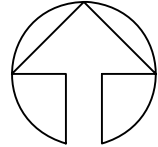
ACCESSIBLE TICKET BOOTH IS IN
THE PERFORMING ARTS CENTER
ON THE SECOND FLOOR

STADIUM HIGH SCHOOL
111 NORTH E STREET
TACOMA, WA 98403
ACCESSIBLE ROUTE OF TRAVEL MAP

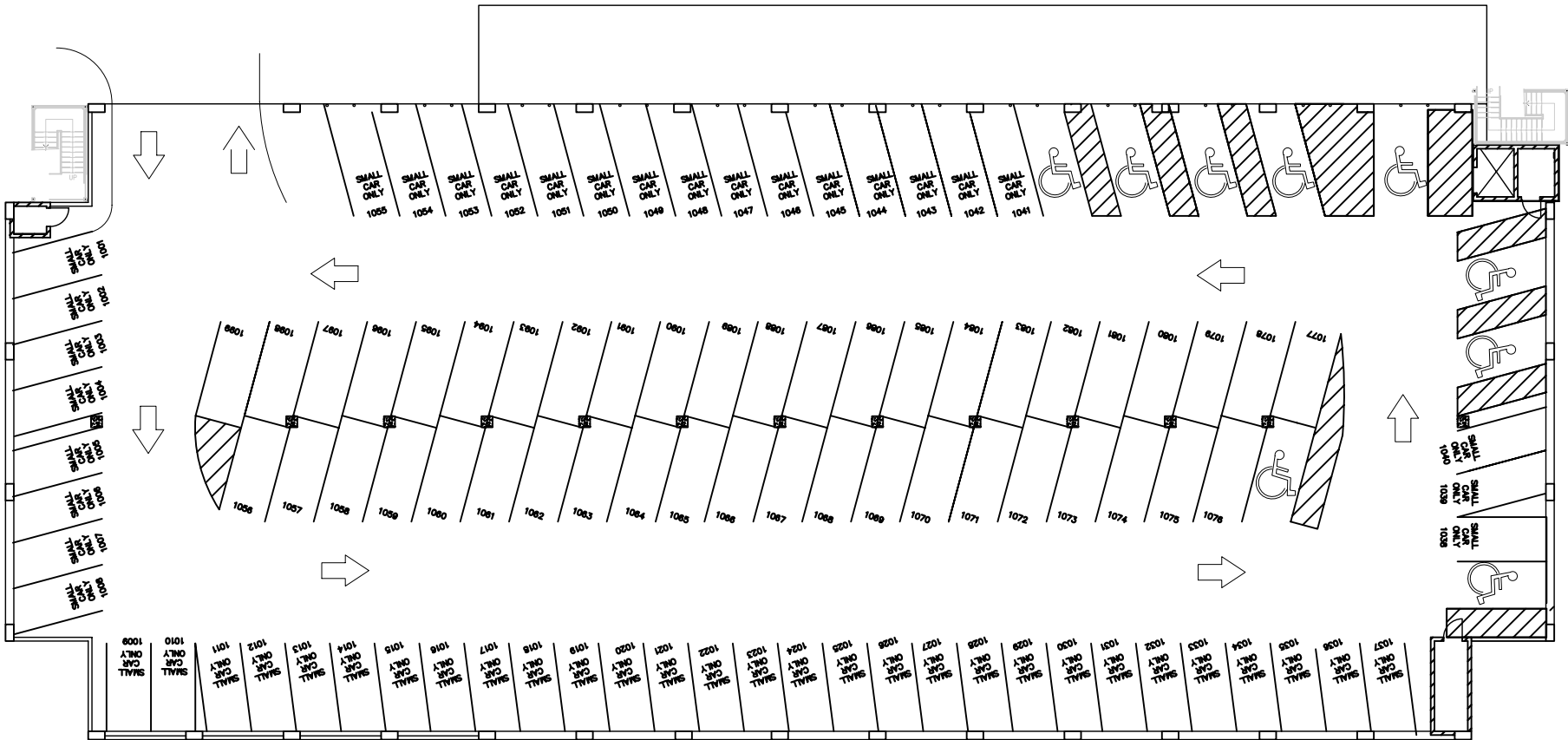
PARKING GARAGE ENTRANCE

SITE PLAN

N.T.S.



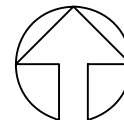
Planning & Construction
Tacoma Public Schools
3223 South Union Avenue, Tacoma WA 98409



LEVEL ONE

SCALE: 1"=30'

LEVEL ONE CAPACITY	
STANDARD PARKING	44
COMPACT PARKING	55
HANDICAPPED PARKING	9
TOTAL	108



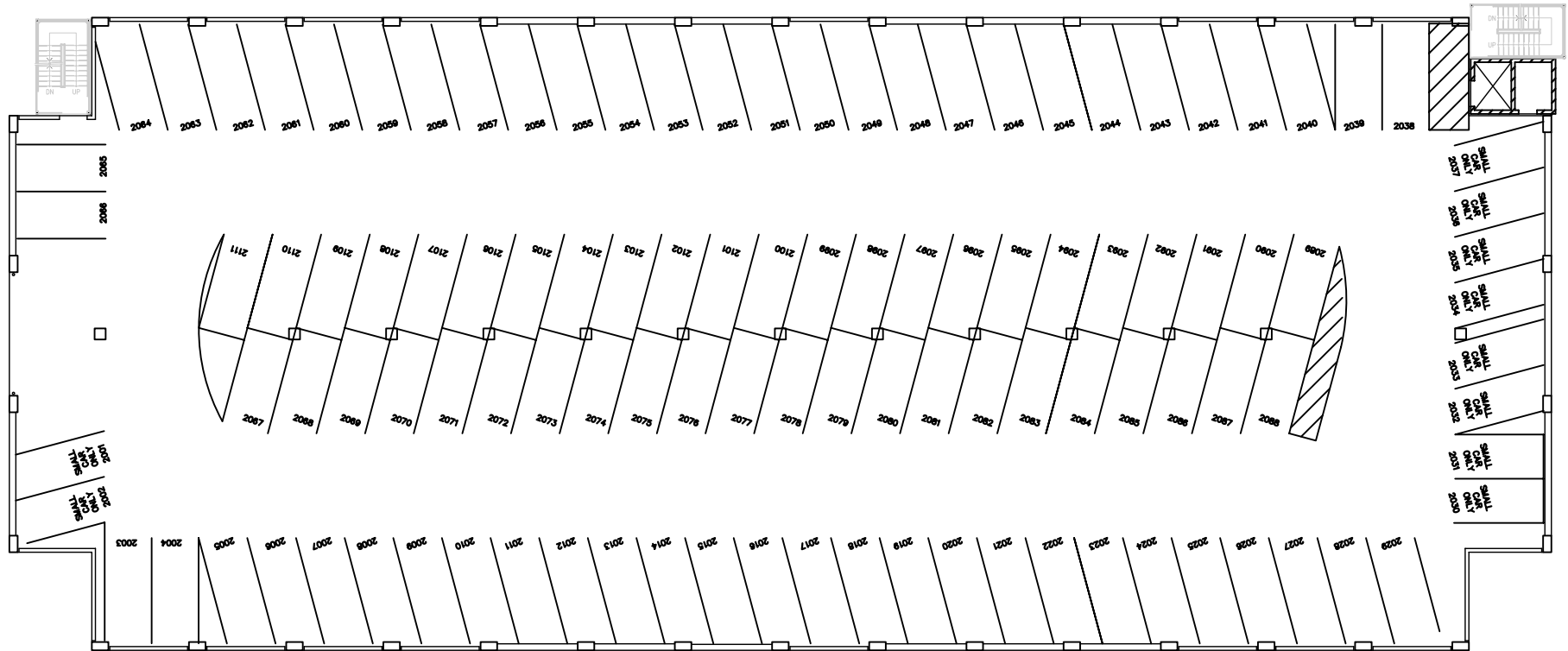
STADIUM HIGH SCHOOL
 111 NORTH "E" STREET
 TACOMA, WA 98403
 PARKING GARAGE- LEVEL 1

Planning & Construction
 Tacoma Public Schools
 3223 South Union Avenue, Tacoma WA 98409

DATE:
9-16-2009
 SCALE:
as shown
 DWN BY:
D. PLATT

C-1

C-1 OF 2

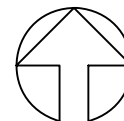


LEVEL TWO

SCALE: 1"=30'

LEVEL TWO CAPACITY

STANDARD PARKING	101
COMPACT PARKING	10
TOTAL	111



STADIUM HIGH SCHOOL
111 NORTH "E" STREET
TACOMA, WA 98403
PARKING GARAGE- LEVEL 2

Planning & Construction

Tacoma Public Schools
3223 South Union Avenue, Tacoma WA 98409

DATE:
9-16-2009

SCALE:
as shown

DWN BY:
D. PLATT

C-2

C-2 OF 2